

Seoul Semiconductor Z-Power LED P9 Series Teardown and Technology Analysis

Table of Contents

1. Product Identification	2
2. External Appearance and Principal Dimensions	2
3. Package General Description	5
- Fluorescent medium and encapsulation	
- Die configuration and attach	
- Electrical protection	
- Table of package parameters	
4. Semiconductor Die	19
- Materials, dimensions, and singulation	
- Appearance	
Lower level contact	
Upper level contact	
- Epi-stack	
- Process sequence	
- Table of die process parameters	
5. Summary	37

1. Product Identification

The device subject to teardown for this work is a cool white Seoul Semiconductor Z-Power LED P9 Series lamp, also referred to as the P9 ZLED.

Manufacturers	Device ID	Date/Lot code
Seoul Semiconductor	W92050	AA5697

2. External Appearance and Principal Dimensions

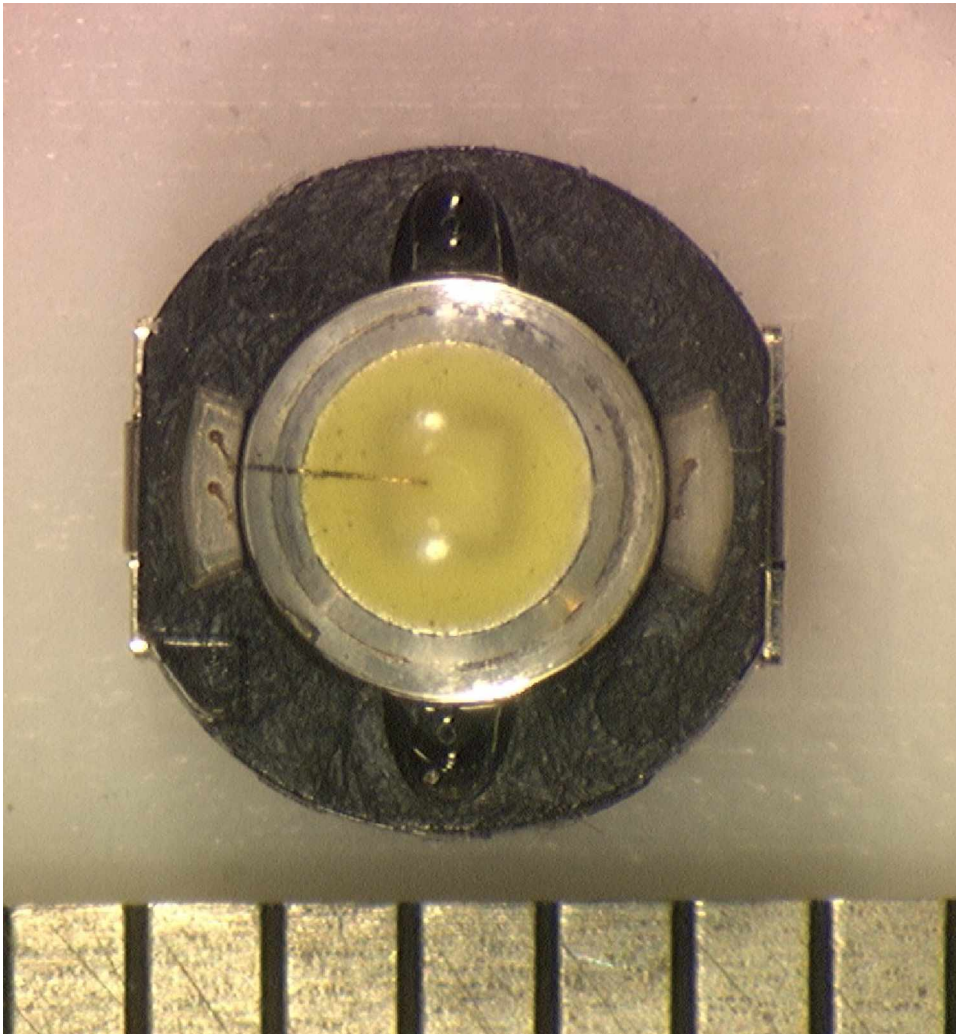


Figure 2.1: Top view of the P9 ZLED. The ruler divisions are 1mm apart.

MuAnalysis Inc. makes no representations, does not warrant, and shall have no liability whatsoever in respect of any information disclosed pursuant to any agreement to provide services.

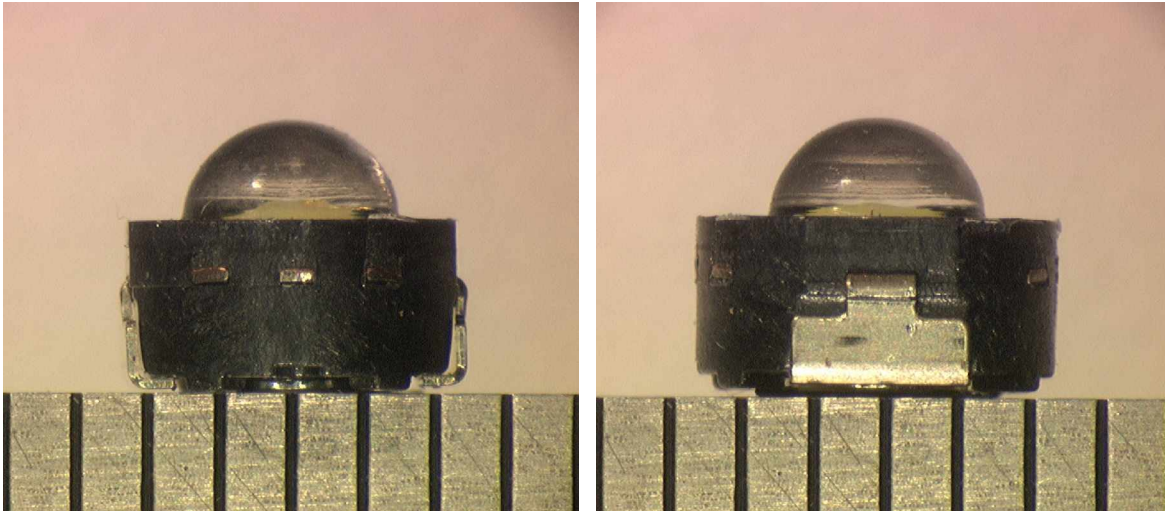


Figure 2.2: Elevation views of the P9 ZLED along the X and Y axes. The ruler divisions are 1mm apart.

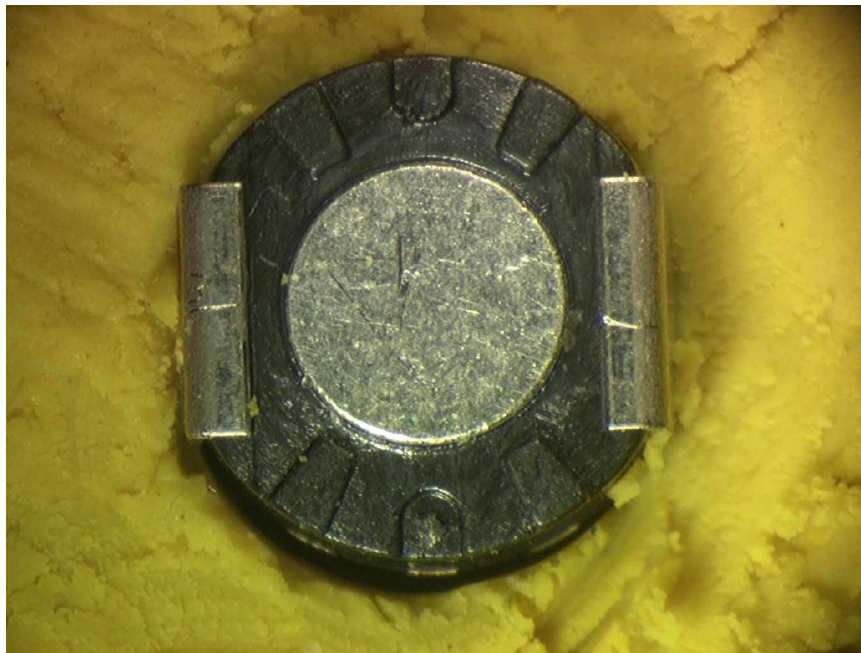


Figure 2.3: Underside view of the P9 ZLED. The central feature is a massive heat sink electrically connected to the anode.

To purchase the full report, or to request further analyses on this product, please contact sales@muanalysis.com or call 1-613-721-4664

© 2009. MuAnalysis Inc.

MuAnalysis Inc. makes no representations, does not warrant, and shall have no liability whatsoever in respect of any information disclosed pursuant to any agreement to provide services.